

Children's Services

# Starting School

A guide for parents/carers of children born  
between 1/9/07 and 31/8/08



Copyright Central Bedfordshire Council 2011



## Why not apply for a place online?

### Apply online at

**[www.centralbedfordshire.gov.uk/onlineadmissions](http://www.centralbedfordshire.gov.uk/onlineadmissions)**

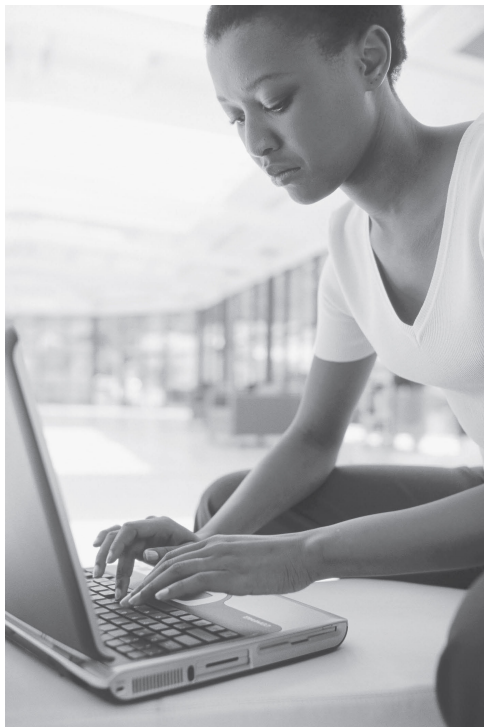
We strongly recommend that you apply for your child's lower school place using the online facility

- It's quick and easy to do
- You will get email confirmation that your application has been received
- There is no risk that your application will get lost in the post
- The system has a series of security procedures which will prevent anyone seeing information they are not entitled to see
- You will receive an email on allocation day informing you of the outcome of your application

It is available 24 hours a day 7 days a week up until the closing date of 15 January 2012.

### Don't delay. Log on today!

**[www.centralbedfordshire.gov.uk/onlineadmissions](http://www.centralbedfordshire.gov.uk/onlineadmissions)**



## Contents

Why not apply for a place online?	1
A message from the Portfolio Holder for Children's Services	3
Introduction	4
Who to contact	4
The lower school admissions timetable	5
Which schools can I apply to?	6
When will my child start school?	6
Applying to a Central Bedfordshire school if you live outside Central Bedfordshire	7
What you should consider when expressing a preference for a school	7
Admissions Criteria	8
How to complete the application	10
How are places allocated?	14
Late applications	16
How you will hear the result of your application	16
Waiting lists	16
Home to school transport	17
Directory of Schools	20
Lower school information sheets-Key	22
Lower school information sheets	24
Central Bedfordshire schools admissions criteria	56
Map of Central Bedfordshire with parish boundary	67

## Message from the Portfolio Holder for Children's Services

Welcome to the Central Bedfordshire Council's Starting School Information Booklet. This booklet is for parents/carers of children who are due to start school in September 2012 or later during that academic year.

Starting school is a huge milestone in your child's life and you may have already been thinking about the school that you would like your child to attend.

As the Portfolio Holder for Children's Services in Central Bedfordshire, I want to make sure that you have the necessary information to enable you to make an informed decision regarding your child's education.

This booklet provides you with important information to help you through the process of applying for a school place. It provides information about the schools in the area and explains how and when places are allocated.

I should like to invite and encourage you to apply for a school place using the online application system. Applying online is a quick, safe and efficient way of making your application and offers many benefits which are outlined in this booklet. Whilst we recommend that you apply online you may, if you prefer, complete a paper application form.

I hope that you will find the information in this booklet helpful. If you require any further guidance, support or advice, please contact the School Admissions general enquiries line, telephone 01234 718120.

May I take this opportunity to wish your child every success as they start their education.

*Picture to be inserted*

**Mark Versallion**

Portfolio Holder for Children's Services

## Introduction

Central Bedfordshire Council and Bedford Borough Council have agreed to provide a shared School Admissions Service to parents/carers of children living in these local authority areas and whose children are eligible to start school during the 2012/13 academic year.

Although the process of applying for school places in the two authorities will be administered, until 31 July 2012, by the team of staff based at Borough Hall in Bedford, each of the authorities is responsible for making the decisions about admissions to schools in their area. It is important, therefore, that you apply for a school place using the appropriate application form and in accordance with the information contained in this booklet.

Legislation requires you to complete the application form for the local authority in which you live, even though we are sharing the service with Bedford Borough Council. Therefore, if your child was born between 1 September 2007 and 31 August 2008 and you live in Central Bedfordshire you must list all of your preferred schools on the application form, even if the schools are outside of the Central Bedfordshire Council area.

Don't forget that you can apply for a school place online:

- Residents of Central Bedfordshire- you can apply online at: **[www.centralbedfordshire.gov.uk/onlineadmissions](http://www.centralbedfordshire.gov.uk/onlineadmissions)** (Residents of Central Bedfordshire only)
- Residents of other Local Authorities – unfortunately our online system will not accept applications from residents of other local authorities, please contact your home local authority for details on how to make your application.

Please make the time to visit the schools before you apply so that you have all the information you need.

## Who to contact

### The School Admissions Service

We are based at Borough Hall in Bedford. If you have any enquiries about how to apply for your child's school place, please contact our School Admissions general enquiries line on: **01234 718120** Email: **[admissions@centralbedfordshire.gov.uk](mailto:admissions@centralbedfordshire.gov.uk)**

If you would like details of schools in other authorities please contact the Local Authority directly.

#### Contact details for school admission teams in neighbouring authorities

<b>Bedford</b> Tel: 01234 718120 <a href="mailto:admissions@bedford.gov.uk">admissions@bedford.gov.uk</a>	Buckinghamshire Tel: 01296 383250 <a href="mailto:admissions@buckscc.gov.uk">admissions@buckscc.gov.uk</a>	Cambridgeshire Tel: 01223 699200/ 699662 <a href="mailto:admissions@cambridgeshire.gov.uk">admissions@cambridgeshire.gov.uk</a>
Hertfordshire Tel: 0300 123 4043 (customer service centre) <a href="mailto:hertsdirect@hertscc.gov.uk">hertsdirect@hertscc.gov.uk</a>	Luton Tel: 01582 548016 <a href="mailto:admissions@luton.gov.uk">admissions@luton.gov.uk</a>	Milton Keynes Tel: 01908 253450/ 253085 <a href="mailto:education@milton-keynes.gov.uk">education@milton-keynes.gov.uk</a>

## The lower school admissions timetable

### **October 2011**

We will publish our booklet on lower school admissions.  
Available online at [www.centralbedfordshire.gov.uk/admissions](http://www.centralbedfordshire.gov.uk/admissions)



### **October 2011 to 15 January 2012**

You can apply online at [www.centralbedfordshire.gov.uk/onlineadmissions](http://www.centralbedfordshire.gov.uk/onlineadmissions) or you can complete and return a paper application form to your home local authority



### **15 January 2012\***

By this date, you must have applied online or returned your home local authority



### **27 April 2012**

A letter will be posted to you to let you know the outcome of your application. If you have applied online you will be sent an email

\*It is very important to submit your application by this date. This means we will have the time to deal properly with all applications before we write to notify you of the outcome.



## Which schools can I apply to?

We operate a catchment area policy. This means that there will be a lower school which serves the area where you live. You can find out which school serves your local area by logging onto the Central Bedfordshire Council website:

- [www.centralbedfordshire.gov.uk/admissions](http://www.centralbedfordshire.gov.uk/admissions)

If you do not have access to the internet, please contact us.

Most parents will want their child to attend the catchment area school but you have the right to express a preference for another school or schools, if your preferred school is not your catchment area school. You may wish to apply for your catchment school, as well. This will usually mean that, if a place is not available at your preferred school, you will still have priority for a place at your catchment area school. If you do not ask for a place at your catchment school, it could result in your child attending a school some distance from your home. You would be responsible for transporting your child to that school.

## When will my child start school?

Many schools admit children into a nursery unit or class at 3 or 4 years of age. **If your child has been admitted to a nursery unit or class or been offered a place in one this does not automatically mean that a place will be available in the reception year.** You must formally apply for a reception year place in accordance with the arrangements set out in this booklet. You must not complete the application to apply for a place in a nursery unit or class. Individual schools will deal with applications for nursery places.

Children are normally admitted to school in the September following their fourth birthday, which is at the start of the reception year.

Children do not have to start school until they reach statutory school age. The dates when children reach statutory school age are as follows:

Birthday between	Term in which statutory school age
1 September 2007 – 31 December 2007	Spring 2013 (January)
1 January 2008 – 31 March 2008	Summer 2013 (April)
1 April 2008 – 31 August 2008	Autumn 2013 (September)

You should apply for a place at the normal time of admission, although your child does not have to start school until they are statutory school age. If you wish, you can then ask for the place to be deferred until your child is of statutory school age, but you **must** take up that place by April 2013. This means that, if your child is of statutory school age in September 2013, you **cannot** defer admission until the September, your child will need to take up the place in the summer term (April). If the place isn't taken up by the summer term you will have to re-apply for a place because the admission would be into a different year group. You may then find that there is no place available.

Your child can attend full time from the start of the academic year if that is your wish. However, your child does not have to attend school full time until he or she is of statutory school age. You should discuss your child's individual needs with the school.

## Applying to a Central Bedfordshire school if you live outside Central Bedfordshire

If you live outside the Central Bedfordshire area and you wish to apply for a place in a Central Bedfordshire school, you must complete your own Local Authority's application form. Your own Local Authority will inform us if you have put any Central Bedfordshire schools on their application form. We will not be able to process any applications we receive on a Central Bedfordshire application from out of area parents.

Even if your Local Authority accepts more than three preferences, please note that we will only accept a maximum of three schools.

### What you should consider when expressing a preference for a school

At the back of this booklet you will find information about every Central Bedfordshire school. The 'key' on page 22 explains the difference between an academy, a community school, a foundation school, a trust school, a voluntary-aided school and a voluntary-controlled school. Some voluntary aided schools do not serve a catchment area. Those schools are listed on page 11.

#### For each school you will find:

- the address
- the name of the headteacher
- the telephone number
- the email address (where applicable)
- the website address (where applicable)
- the category of the school and the age range
- the number on roll for January 2010
- the admission number (how many pupils the school can admit)

As well as this basic information you will also find:

- the designated measuring point used in the event of the school being oversubscribed
- the number of applications received and the number of places offered for admissions in September 2011
- at which point on the list of admissions criteria the last place was offered for September 2011 admissions

The admissions criteria for each school can be found towards the back of the booklet.

You can also get the following information from individual schools:

- the school prospectus
- the governors' annual report to parents
- inspection reports by the Office for Standards in Education (OFSTED)

These documents will tell you what you need to know about the school, for example:

- the school's aims and objectives
- details of the curriculum offered
- National Curriculum Assessment results

You may also find the following websites helpful:

- Department for Education: [www.dfe.gov.uk](http://www.dfe.gov.uk)
- OFSTED: [www.ofsted.gov.uk](http://www.ofsted.gov.uk)

For information about education in Central Bedfordshire please visit:

• [www.centralbedfordshire.gov.uk](http://www.centralbedfordshire.gov.uk)

When using the Central Bedfordshire website, the Education and Learning section has a range of information about education in Central Bedfordshire.

### **Oversubscription**

The number of children choosing a particular school varies from year to year and different schools have different admission numbers.

In some cases the number of places offered was more than the admission number. This may be because the number of children living in the catchment area was higher than the admission number. This does not mean that there will be a similar number of places in September 2012. Please refer to the admission limit for each school.

**A school may be oversubscribed one year but have places available the next year. Likewise, the fact that a school had places available in September 2011 does not mean that you will definitely get a place there in September 2011.**

Each school has a prospectus which includes details about the level of oversubscription and how places for September 2011 were allocated.

### **Admissions criteria**

Admissions criteria are the rules we apply when there are more applications for places than places available. They explain the order in which places are allocated. All schools have published admissions criteria.

We have standard criteria which many schools use. Some schools have additions to our standard criteria and you will find details of these towards the back of this booklet. This will help you to judge whether you meet the criteria for admission to a particular school. It will also help you to complete the application form.

### **Standard Admissions Policy 2012 Community and Voluntary Controlled Schools**

The Local Authority will apply the following criteria (in the rank order shown) to decide the order in which places will be allocated when there are more requests from parents/carers than the number of places available:

1. All 'Looked after' children
2. Pupils living in the catchment area with siblings at the school
3. Other pupils living in the catchment area
4. 'Very exceptional' medical grounds
5. Other siblings
6. Any other children

### **Notes**

1. If applying these criteria results in there being more children with an equal right to admission to the school than the number of available places, the tie break will be the distance the pupil lives from the school, measured in a straight line, using the Local Authority's computerised measuring system, with those living closer to the school receiving the higher priority. The Local Authority will measure the distance from the address point of the pupil's home to a point on the school site agreed with the

governing body of the school. The Local Authority will not give priority within each criterion to children who meet other criteria.

2. The Local Authority will normally offer a place at the catchment area school if parents apply for a place at that school during the normal admissions round. However, a place at the catchment area school cannot be guaranteed. If a pupil moves into the catchment area outside the normal admissions round (or after the allocation process has been completed) it may be more difficult to offer a place at the catchment area school if this would mean exceeding the admission number at the school. In this case, a place will normally be offered at the next nearest maintained school which caters for pupils of the same age and has places available.

3. Pupils who have a Statement of Special Educational Needs are required to be admitted to the school which is named on the statement, even if the school is full. Pupils identified for admission through the Fair Access Protocol will also be admitted even if the school is full.

## Definitions

### **'Looked after' children**

The Children Act 1989 defines a child who is 'looked after' as a child or young person who is accommodated by the local authority (Section 20) or a child or young person who is the subject of a full care order (Section 31) or interim care order (Section 38).

### **Sibling**

A sibling refers to a brother or sister, half brother or sister, adopted brother or sister, step brother or sister or the child of the parent/carer's partner, and in every case, the child should be living at the same address. The sibling must be in the school at the time of application and be likely to remain in the school at the proposed date of admission.

### **'Very Exceptional' Medical Grounds**

'Very exceptional' medical grounds refers to cases where there are **exceptional** medical reasons which make it **essential** that a child should attend a particular school and where the preferred school is the **only** school locally that could meet the child's needs. A medical report from the child's doctor or consultant must be submitted with the application form, setting out valid medical reasons why it is essential for the child to be admitted to the school in question and the difficulties that would be caused if the child had to attend another school. The comments of the Authority's medical officer may be sought to decide whether it is essential for a child to be admitted to the preferred school on medical grounds. Admission on medical grounds cannot be considered where the medical condition relates to that of a parent/carer, brother or sister or other relative/childminder.

### **Home Address**

A pupil's home address will be regarded as the address of the parent/carer with parental responsibility with whom the child normally lives. This will not usually include grandparents, aunts or uncles. Where a child spends time with parents/carers at more than one address, the address used to allocate a school place will be the one at which the pupil is ordinarily resident and where the child spends the majority of the school week (Mondays to Fridays) including nights. If there is any query on the home address this will be checked against original official documentation e.g. council tax bill, a recent utility bill (gas, electricity or water), a rental agreement, child benefit annual statement or family tax credit information.

## How to complete the application

The law says that every parent must have the opportunity to express a preference for the school or schools they want their child to go to. The application form gives you this opportunity, but we would strongly recommend that you apply online at: [www.centralbedfordshire.gov.uk/onlineadmissions](http://www.centralbedfordshire.gov.uk/onlineadmissions) (residents of Central Bedfordshire only).

Although the admissions procedures for children with statements of special educational needs are different from those of other children (see 'Other Information'), we ask parents to use this form to confirm the school they would like their child to attend. You should complete only one application form and list the schools you want your child to attend in order of preference. If you apply online, please do not submit a paper application. **If you do, your latest application will be the one that we process.** The following notes and the notes on the application form are designed to help you complete the application. Please read them carefully and answer all the relevant questions, giving further details where the application asks for them. If you are not sure how to complete the application, please contact us.

### Pupil Details

**Please complete your child's personal details in all the boxes in this section.**

If you move after submitting your application, you should notify us as soon as possible, but please be aware that we cannot guarantee to take account of your new address if the allocation process has begun. Although we are not asking parents/carers to provide evidence that they have parental responsibility or to provide proof of address, we will be carrying out random checks and you may therefore, be asked to provide this information at a later date.

**Please note: We will withdraw the offer of a place if we find that you have given fraudulent or misleading information that has effectively denied a place to a child with a stronger claim – for example if you claim to live in the catchment area when you don't.**

### School Preferences

**This section allows you to express a preference for the school or schools you want your child to go to, even if the school is in another local authority area,** This form also applies if your child has a statement of special educational needs, but please refer to the section 'Other Information'. Do not include in this section any independent schools. Most parents will want their child to attend the catchment area school, but you have the right to express a preference for another school or more than one school. We will consider your child for each of the schools you put on the application. If there is a place for your child at more than one of those schools, we will offer you a place at the school you have identified as your highest preference. This may not apply if your child has a statement of special educational needs.

You may wish to put your catchment area school as one of your preferences. This will usually mean that you still have priority for a place at the catchment area school if there isn't a place for your child at your preferred school or schools.

If you are not sure what is your catchment area school, please check our website: [www.centralbedfordshire.gov.uk/admissions](http://www.centralbedfordshire.gov.uk/admissions)

The school information at the back of this booklet will tell you what type of school your catchment area school is and the 'key' on page 22 gives the definitions of the various types of school. Some schools do not serve a local catchment area, these are:

- Ashton St Peters VA (C of E) Lower School
- Pulford VA (C of E) Lower School
- St Marys (Caddington) VA (Catholic) Lower School
- St Vincents VA (Catholic) Primary School
- Thomas Whitehead VA (C of E) Lower School

Admission to these schools is in accordance with the school's own admissions criteria. The other voluntary aided schools serve a local catchment area as well as providing a faith-based education in their local area. Their admission policies reflect this.

The law says that admissions authorities must consider admitting children whose parents have expressed a preference for a school before they consider those whose parents have not expressed any preference. Therefore, if you do not make a request for your catchment area school according to the published admission arrangements it could result in a place not being available at that school. It could also affect your entitlement to free transport (see the section on home to school transport on page 17 ).

### **Other Children**

In some cases your child may have a greater chance of being offered a place at a school if an older child already goes to that school but this is not a guarantee of a place. **If, at the time of admission, you will have another child still going to one of the schools you have nominated, please put their name, date of birth and the school they attend, in the relevant section on your application form.**

We will check this information with the school(s) concerned. If you do not provide this information or this section becomes relevant to you after the allocation process is completed, we cannot guarantee you a place at the school(s) concerned.

### **Other Information**

#### **i) Children with a statement of special educational needs** *(to be verified)*

It would be helpful if you could complete this section if your child has a statement of special educational needs or if your child is currently going through the statementing process. The arrangements for admitting a child with a statement of special educational needs are different to those for children who do not have a statement. The 1996 Education Act says that we must consult with the Headteacher and Governing Body of the school before we can name a particular school within a statement.

The Local Authority must name your nominated school in the statement if:

- the school can meet your child's needs
- the placement constitutes an efficient use of resources
- the placement results in the efficient education of all children with whom your child will be educated.

We will let you know as soon as possible the name of the school which we propose to name on your child's statement of special educational needs.

If you have any queries or concerns about this process, please contact the Assessment and Monitoring Team, telephone: 0300 300 8000.

If your child's special educational needs are supported at School Action or School Action Plus, your preferences for their school place will be treated in the same way as all other applications. If you have concerns about your child's special educational needs when they start school, you can talk in confidence with the Parent Partnership Service, telephone 0300 300 8088.

#### ii) 'Looked After' Children

'Looked after' children have the highest priority for admission. You will find the definition of a 'looked after' child on page 9. If your child is 'looked after', you must include the details on the application form. We will check this information with the appropriate authority.

#### iii) 'Very Exceptional' Medical Grounds

If your child has a genuine and longstanding medical condition this may give him or her a greater chance of a place at your preferred school(s). It is not, however, a guarantee of a place. We will consider your application on medical grounds where there are '**very exceptional**' medical reasons which make it **essential** for your child to attend a particular school and where the preferred school is the **only** school locally that could meet your child's needs. In recent years very few applications have met this criterion. With the application form, you must submit a medical report from your child's doctor or consultant, setting out valid medical reasons why admission to the school is essential and the difficulties that would be caused if your child had to attend another school.

We may seek the comments of our medical officer to determine whether it is essential for your child to be admitted to the preferred school on medical grounds. We cannot consider admission on medical grounds when those grounds relate to the medical condition of a parent, brother or sister, other relative or childminder.

#### Independent school

If you are also applying for a place at an independent school, please provide us with the name of the school in the box provided. You should keep us informed about the progress of your application. This will avoid us allocating a place for your child at a school which you do not need.

#### Additional information

##### Nursery/Pre-School

Some schools give priority to children from outside the catchment area who attend the nursery/pre-school. However, this does not guarantee a place. If any of the schools you nominate have this as part of their admissions criteria and your child attends one of these schools you must provide the details in Section A so that we can take it into account when we consider your application. If your child is admitted to a nursery/pre-school after the allocation process is completed there will be no guarantee of a place at the school(s) concerned.

#### Declaration:

**Please complete this part of the application.** If you are applying for a place at a school on religious/faith grounds, please remember to complete the relevant sections.

## **Religious/Faith Grounds**

Voluntary Aided schools provide religious education that follows the teaching of a particular faith. We have Church of England schools and Catholic schools. Being a practising member of the appropriate faith, or having been baptised into that faith, may give your child a greater chance of a place at that school according to the school's admissions criteria. However it does not guarantee you a place. Being a practising member of another faith may also give your child a greater chance of a place at that school, however it is not a guarantee.

**If you are applying for a place at a school on religious or faith grounds, it is important to provide all the information requested on the application.**

If you are applying for a place at the following schools on religious or faith grounds you **must** also arrange for your priest, minister or faith leader to complete and sign the 'Declaration by Priest, Minister or Faith Leader' on the application form, or if you are applying online please complete the appropriate supplementary form available on the website **[www.centralbedfordshire.gov.uk/onlineadmissions](http://www.centralbedfordshire.gov.uk/onlineadmissions)**

- All Saints Lower School
- Ashton St Peter's Lower School
- John Donne Lower School
- Meppershall Lower School
- Northill Lower School
- Pulford Lower School
- St Leonards Lower School
- St Mary's (Clophill) Lower School
- Sutton Lower School
- Thomas Whitehead Lower School

Some Voluntary Controlled Schools give a higher priority to applicants who apply on religious grounds. If you are applying for a place at the following schools on religious or faith grounds you must also arrange for your priest, minister or faith leader to complete and sign the "Declaration by Priest, Minister or Faith Leader" on the application form or the supplementary form if you apply online.

- Dunton Lower School
- St Andrews Lower School
- St Marys (Stotfold) Lower School

If you are applying for a place on religious grounds at the following schools because your child has been baptised, you must provide a copy of their baptismal certificate. In addition, if you are a practising member of a religion or faith you must make sure that your priest, minister or faith leader completes the 'Declaration by Priest, Minister or Faith Leader' on the application form or if you are applying online please complete the appropriate supplementary form available on the website:

**[www.centralbedfordshire.gov.uk/onlineadmissions](http://www.centralbedfordshire.gov.uk/onlineadmissions)**

- St Mary's (Caddington) Lower School
- St Vincent's Primary School

**If you are applying online, please make sure you complete the 'Confirmation of Religious Affiliation' form available from:  
[www.centralbedfordshire.gov.uk/onlineadmissions](http://www.centralbedfordshire.gov.uk/onlineadmissions)**



If you live in Central Bedfordshire and your preferred school is in another Local Authority you will need to ask them how to provide this information.

If you live in another Local Authority's area you can obtain the 'Confirmation of Religious Affiliation' form from our website:

[www.centralbedfordshire.gov.uk/admissions](http://www.centralbedfordshire.gov.uk/admissions)

#### Data Protection Act 1998

We will hold the personal details supplied on the application form for the purposes of processing your application for a school place. We will share the information internally within the Council with relevant officers and schools and may also share it with other relevant Local Authorities. We will safeguard your personal details and will not divulge them to any other individuals or organisations for any other purposes.

## How are places allocated?

### Community and Voluntary Controlled Schools

The Local Authority, is the admission authority for community and voluntary controlled schools. This means that we allocate places for admission into the reception year. The headteachers of these schools **are not** authorised to offer your child a place in the reception year. If the headteacher of one of these schools indicates that he or she will offer your child a place, you **cannot** assume that this will be so. You must have a letter from us offering your child a place before your child can start in the reception year at one of these schools. However, if you are applying for a place in a nursery unit or class, before admission into the reception year, the school **will** be authorised to deal with your nursery application and will let you know if a place is available. If your child has a statement of special educational needs please see Other Information.

### Academy, Foundation, Trust and Voluntary Aided schools

The admission authority for an academy, foundation, trust or voluntary aided school is its Governing Body. This means that the school governors determine the applications according to the school's admission criteria. However, we write to parents on the school governors' behalf to offer school places in the reception year. You must have a letter from us offering your child a place before your child can start in the reception year at one of these schools. A letter from the school is not a valid offer. However, if you are applying for a place in a nursery unit or class, before admission into the reception year, the school will be authorised to deal with your nursery application. If your child has a statement of special educational needs please see Other Information.

### Equal preference - how does it work?

All our schools operate an equal preference system for allocating places. This means that there are two stages in the allocation process.

#### Stage 1:

All first, second and third preference applications are considered equally against the schools' admissions criteria. At this stage there is no distinction between first, second and third preference applications. For example, if the school has 30 places and there are 45 first, second and third preference applications, all applications are considered equally against the admissions criteria.

**Stage 2:**

If we are able to offer a place at more than one school, the school ranked higher by the parent (i.e. first or second preference on the application form or online application) will be offered and any lower ranking offers will be disregarded. For example, a parent's first and third preferences might both qualify for a place, in which case the parent would be offered their first preference, leaving the place at the third preference school available for another pupil.

**Offers**

Occasionally the last child we offer a place to at a school is the first child from a family with multiple births, determined by alphabetical order of first name. If this happens at a school where children are taught in classes of 30 we cannot offer a place at the school to the other child/children in the family as it is against the law for Key Stage 1 classes to have over 30 children.

If the first child is offered a place at a community or voluntary controlled school which has fewer than 30 children in a class then it may be possible to offer a place to the subsequent child/children even if it takes the school over their agreed number. If this happens at a foundation, trust or voluntary-aided school we would ask the school to admit the subsequent child/children so long as this would not take the class over 30.

Pupils living within the area of Central Bedfordshire Council who have not been allocated a place at any of their preferred schools, will be allocated a place at the nearest Central Bedfordshire school to their home address with places available.

**Fair Access Protocol**

The Local Authority has a Fair Access Protocol which has been agreed with all schools. The protocol applies in exceptional cases where the circumstances of the child mean that the normal admission procedure cannot ensure that the child will be admitted to a suitable school as quickly as possible.

In most cases children will be admitted to school in accordance with the arrangements set out in this booklet or in accordance with the in year admission arrangements (In-Year Admission Notes of Guidance are available from the School Admissions Service). However, for some children without a school place, for example children permanently excluded from a school, the normal admission process may not result in a suitable school placement for the child. Children identified for a school place through the Fair Access Protocol will take precedence over other children on a waiting list for admission and may be admitted to a school even if that school is full.

## Late applications

The closing date for applications in the normal admissions round is 15 January 2012.

As far as is reasonably practicable we will accept applications for places in the normal admissions round that are received late for good reason. If we receive applications late with good reason after the allocation procedure has begun we will consider them if it is practicable to do so, however we cannot guarantee to do this. If we receive applications late with good reason after places have been offered we will prioritise the applications and any waiting list according to the admissions criteria of the individual schools and we will offer a place at the highest preference school that has a place available. If all preferred schools are full and the pupil lives within the area of Central Bedfordshire Council, a place will generally be offered at the nearest school with places available. However, it may be necessary to make a priority placement for children whose application is late for good reason.

## How you will hear the result of your application

When we have completed the allocation process, we will write to tell you the outcome of your application. A letter will be posted to you at the end of April 2011 to tell you where your child has a place. If you have applied online you will also receive an email.

Please note that we will not be able to give you this information over the telephone. If your child has a statement of special educational needs, the Assessment and Monitoring Team will write to you at the appropriate time to tell you the school where your child has a place. If we are not able to offer you a place at your preferred school or schools, you have the formal right of appeal to an independent Admissions Appeals Panel. Information will be sent to you about the Appeals Procedure. Appeals are normally heard during the summer term. If we are not able to offer a place at any of your preferred schools and you live in the area of Central Bedfordshire Council we will offer your child a place at:

- **the catchment area school, if there are still places available; or**
- **the next nearest Central Bedfordshire Local Authority school to your child's home address which has places available.**

We will also tell you which other schools still have places available. You will be able to request a place at one of those schools. However please be aware we will not be able to consider another application for a place at the same school in the same academic year unless there has been a change of circumstances relevant to the application.

If your child has a statement of special educational needs, the Admissions Appeals Panel cannot deal with your appeal. If you are unhappy about the school which has been named on the statement, you should contact the Assessment and Monitoring Team, telephone: 0300 300 8000.

### Waiting Lists

If we have not been able to offer you a place at your preferred school(s), we will place your child's name on the waiting list which will be prioritised according to the admission criteria for individual schools. If a place becomes available we will contact you, even if you have accepted a place at another school. Your child's position on the waiting list could change if other children are added or removed. For the majority of

schools the waiting lists will be maintained until **the end of Autumn term 2012**. Please contact us for further information. Academy, foundation, trust and voluntary aided schools may have different arrangements for maintaining their waiting lists and you should contact those schools for further information.

## **Home to school transport** *(to be verified)*

Generally, as a parent, you are responsible for your child's journey to and from school. However, the local authority provides free transport in certain circumstances. You can get full details of the transport policy from The School Transport Entitlement Team, Children's Services, Central Bedfordshire Council. Telephone 0300 300 8133 or from the Council's website [www.centralbedfordshire.gov.uk](http://www.centralbedfordshire.gov.uk)

**Please be aware that from September 2010 transport on denominational grounds will no longer be provided (unless you are a low income family-please see below)**

### **How we decide who is entitled to free transport**

We consider applications for free transport individually, taking into account the legal requirements and the circumstances of each applicant. Our general policy is to provide free transport for children of compulsory school age (5–15 years) who live in the area of Central Bedfordshire Council, if they:

- go to their designated catchment school; or
- go to the appropriate school nearest to their home which is able to offer them a place; and if they:
- live more than 2 miles (under 8 years of age) or 3 miles (8 years of age and over) away from the school.

Children under eight years of age will continue to receive free transport until the end of the academic year in which they reach the age of eight.

In addition, primary aged children aged 8 but under 11 years of low income families must have travel arrangements made where they live more than 2 miles from their nearest qualifying school by the shortest available walking route.

A low income family is defined as one whose children are entitled to free school meals or who are in receipt of the maximum level of Working Tax Credit.

We measure the distance using the shortest walking route from the child's home to the school. If it is appropriate, we may provide transport on road safety grounds for a child who lives less than 2 or 3 miles from the catchment area school or the nearest school.

We provide transport either by using contract vehicles or by giving pupils passes to travel on public service buses. Pupils may have to walk a reasonable distance to and from home to meet the transport.

If you do not make a request for your catchment area school in the way this booklet describes, there may not be a place for your child at that school. If this happens we will not provide transport to an alternative school, even if that school is more than 2 miles (under 8 years of age) or 3 miles (8 years of age or over unless you qualify for transport as a low income family) from your child's home.

### **Children under statutory school age**

Children under statutory school age are not entitled to free transport. If your child is entitled to transport it will be provided from the start of the term following their 5<sup>th</sup> birthday. You may wish to refer to the table on page 6 which tells you when your child is of statutory school age. Transport may be provided for pupils of pre-statutory school age at concessionary rates if spaces are available on existing routes and following full consultation with the headteacher and parents concerned.

### **Help with transport for pupils who do not go to their catchment or nearest school**

If you express a preference for a school other than the catchment area or nearest school and your child gains a place at that school, we will not normally provide transport or give financial help towards the transport costs unless you qualify for transport as a low income family (children aged 8 - 11 years only). In this case you must accept responsibility for transport arrangements and all costs involved.

If your child travels to school and pays a fare on a normal public service bus, please note that bus companies can alter services or withdraw them and this is outside our control. If this happens we may be able to help by offering a spare seat, at a concessionary rate, on another transport service, if there is one.

### **Transport assistance if the catchment area school is full**

If you express a preference for the catchment area school and it is full we will provide transport to the next nearest Local Authority school with places available, provided you live more than 2 miles (under 8 years of age) or 3 miles (8 years of age or over unless you qualify for transport as a low income family) from that school by the shortest walking route. The same is true if you express a preference for a foundation or voluntary aided school which is also your catchment area school and the school is full.

### **Transport for pupils with special needs**

Children with Special Educational Needs are entitled to assistance with transport where the normal distance criteria apply. Transport is not automatically provided because a child has a statement of special educational needs. The Council recognises that some children with special educational needs may not be able to walk even relatively short distances to school. However others may, with appropriate support, be able to walk or use alternative ways of getting to school.

Transport needs for a child with special educational needs will be assessed as part of the Statutory Assessment Process. The most appropriate mode of travel will be agreed as part of the Statutory Assessment.

### **Living outside Central Bedfordshire**

#### **I do not live in Central Bedfordshire but my child goes to a school in Central Bedfordshire. Can I get any help with transport?**

If you do not live in Central Bedfordshire, you must contact the Local Authority for the area where you live and ask them if they can help.

### **Applying for Transport**

#### **How do I apply for transport for my child?**

There is nothing more you need to do when you have submitted the application form. The School Admissions Service will pass the information to the School Transport Entitlement Team and they will assess whether your child is entitled to free transport.

If, when your child reaches the age of 8 years, you wish to apply for transport because you are a low income family, you should contact the School Transport Entitlement Team for an application form.

If a school admits your child after the start of an academic year you will need to contact the school. They will complete a transport request form and forward it to the School Transport Entitlement Team.

### **Sustainable Modes of Travel Strategy for Schools**

Increased car use and the impact of the 'school run' is a problem everywhere and travel to nurseries and schools in Central Bedfordshire generates a significant number of car journeys contributing to peak time traffic congestion. In association with this there are increasing concerns around road safety at schools and poor health in young people, both in terms of inactive lifestyles, poor air quality and also climate change.

Central Bedfordshire's Sustainable Modes of Travel Strategy sets out how students who attend schools in Central Bedfordshire can be assisted to travel sustainably and safely to and from school. A full list of schools and the schemes they run, as well as more information on our work to help promote safe and sustainable travel to school, can be found within the main strategy and the summary documents which can be found at: [www.centralbedfordshire.gov.uk/transport-and-streets/school-travel](http://www.centralbedfordshire.gov.uk/transport-and-streets/school-travel)

### **Further information**

If you need further help or are not happy with the transport help we offer, you may write to ask us to review the decision. Please give full details to:

The Team Leader  
Home to School Transport  
Children's Services  
Central Bedfordshire Council  
Technology House  
239 Ampthill Road  
Bedford  
MK42 9BD  
Email: [school.transport@centralbedfordshire.gov.uk](mailto:school.transport@centralbedfordshire.gov.uk)  
For general enquiries about transport, please telephone **0300 300 8133**.

## Directory of Schools

This list will help you to find the schools in your local area. Detailed information about the schools can be found on the individual school information sheets.

Location	School Name	Category	Page
Amphill	Russell Lower	Community	44
Amphill	The Firs Lower	Community	52
Arlesey	Gothic Mede Lower	Trust	31
Aspley Guise	Aspley Guise Lower	Community	25
Barton-le-Clay	Ramsey Manor Lower	Community	42
Biggleswade	Lawnside Lower	Community	38
Biggleswade	Southlands Lower	Community	46
Biggleswade	St Andrew's Lower	VC	47
Blunham	John Donne Lower	VA (C of E)	36
Caddington	Caddington Village School	Community	26
Caddington	St Mary's (Caddington) Lower	VA (Catholic)	48
Campton	Campton Lower	Community	26
Chalton	Chalton Lower	Community	27
Clifton	All Saints Lower	VA (C of E)	24
Clophill	St Mary's (Clophill) Lower	VA (C of E)	48
Cranfield	Cranfield Lower	VC	28
Dunstable	Ardley Hill Lower	Community	24
Dunstable	Ashton St. Peters	VA (C of E)	24
Dunstable	Beecroft Lower	Community	25
Dunstable	Downside Lower	Community	29
Dunstable	Dunstable Icknield Lower	Community	29
Dunstable	Hadrian Lower	Community	33
Dunstable	Lancot Lower	Community	37
Dunstable	Lark Rise Lower	Academy	38
Dunstable	St Christopher's Lower	Community	47
Dunstable	Watling Lower	Community	54
Dunton	Dunton Lower	VC	29
Eaton Bray	Eaton Bray Lower	Community	30
Eversholt	Eversholt Lower	Community	30
Everton	Everton Lower	Community	30
Flitwick	Flitwick Lower	Community	31
Flitwick	Kingsmoor Lower	Community	36
Flitwick	Templefield Lower	Community	52
Gravenhurst	Gravenhurst Lower	Community	32
Greenfield	Greenfield Lower	VC	32
Harlington	Harlington Lower	Community	33
Haynes	Haynes Lower	Community	34
Heath and Reach	St Leonard's Lower	VA (C of E)	48
Henlow	Derwent Lower	Trust	28
Henlow	Raynsford Lower	VC	42
Hockliffe	Hockliffe Lower	Community	34
Houghton Conquest	Houghton Conquest Lower	Community	35
Houghton Regis	Hawthorn Park Lower	Community	33
Houghton Regis	Houghton Regis Lower	Community	35
Houghton Regis	St. Vincent's Primary	VA (Catholic)	49
Houghton Regis	Thomas Whitehead Lower	VA (C of E)	53
Houghton Regis	Thornhill Lower	Community	53

Houghton Regis	Tithe Farm Lower	Community	53
Husborne Crawley	Husborne Crawley Lower	Community	35
Kensworth	Kensworth Lower	VC	36
Langford	Langford Lower	Trust	37
Leighton Buzzard	Beaudesert Lower	Community	25
Leighton Buzzard	Clipstone Brook Lower	Community	27
Leighton Buzzard	Doverly Down Lower	Community	28
Leighton Buzzard	Greenleas Lower	Community	32
Leighton Buzzard	Heathwood Lower	Community	34
Leighton Buzzard	Leedon Lower	Community	38
Leighton Buzzard	Linslade Lower	Community	39
Leighton Buzzard	Mary Bassett Lower	Community	39
Leighton Buzzard	Pulford Lower	VA (C of E)	41
Leighton Buzzard	Southcott Lower	Community	46
Leighton Buzzard	St George's Lower	Community	47
Lidlington	Thomas Johnson Lower	Community	52
Marston Moretaine	Church End Lower	Trust	27
Marston Moretaine	Shelton Lower	Trust	44
Maulden	Maulden Lower	Community	40
Meppershall	Meppershall Lower	VA (C of E)	40
Moggerhanger	Moggerhanger Lower	Foundation	40
Northhill	Northhill Lower	VA (C of E)	41
Potton	Potton Lower	Community	41
Pulloxhill	Pulloxhill Lower	Community	42
Ridgmont	Ridgmont Lower	Community	43
Sandy	Laburnum Lower	Community	37
Sandy	Maple Tree Lower	Community	39
Sandy	Robert Peel Lower	Community	43
Sandy	St Swithun's Lower	VC	49
Shefford	Shefford Lower	Community	44
Shillington	Shillington Lower	Community	45
Silsoe	Silsoe Lower	VC	45
Slip End	Slip End Lower	Community	45
Southill	Southill Lower	Community	46
Stanbridge	Stanbridge Lower	Community	50
Stotfold	Fairfield Park Lower	Community	31
Stotfold	Roecroft Lower	Community	43
Stotfold	St Mary's (Stotfold) Lower	VC	49
Studham	Studham Lower	VC	50
Sundon	Sundon Lower	Trust	51
Sutton	Sutton Lower	VA (C of E)	51
Toddington	Toddington St George Lower	VC	54
Totternhoe	Totternhoe Lower	Community	54
Upper Caldecote	Caldecote Lower	VC	26
Upper Stondon	Stondon Lower	Community	50
Westoning	Westoning Lower	Foundation	55
Woburn	Woburn Lower	Community	55
Woburn Sands	Swallowfield Lower	Community	51
Wrestlingworth	Wrestlingworth Lower	VC	55



## Lower schools information sheets - Key

The following pages contain detailed information about our schools to help you to consider which school(s) you would like your child to attend.

Key	
Academy	Academies are all ability schools established by the Department for Education and sponsors from business, faith and/or voluntary groups working in partnership with local education partners. The Governing Body is responsible for the admission arrangements. The Government has published proposals to increase the number of schools applying to become Academies. As a result the status of a school may subsequently change from that printed in this booklet.
Community	The Local Authority is responsible for the admission arrangements. Religious Education in community schools follows the agreed Religious Education Syllabus for the Local Authority.
Foundation	The Governing Body is responsible for the admission arrangements in a Foundation school. Religious Education in Foundation Schools follows the agreed Religious Education Syllabus for the Local Authority.
Trust	A Trust school is a Foundation school which is supported by a charitable trust. A Trust may include just one school or a group of schools working with external partners to share best practice and to support transition between phases. The Governing Body is responsible for the admission arrangements in a Trust School. Religious Education in Trust Schools follows the agreed Religious Education Syllabus for the Local Authority.
VA	Voluntary Aided. The Governing Body is responsible for the admission arrangements in a VA school. Religious education follows the teaching of the Church of England (if C of E) or the Catholic faith (if Catholic). The Council maintains the school but the governors employ the staff and have wider responsibilities for the upkeep of the building than in a Community or Controlled School.
VC	Voluntary Controlled. The Local Authority is responsible for the admission arrangements. Religious worship usually follows the teaching of the Church of England, under the direction of the school Governors. Religious education follows the agreed Religious Education Syllabus for the Local Authority. The Governors have greater control over the use of the premises than in a Community School.
Admission Number	This represents the number of pupils the school can admit in each year. Schools are expected to admit up to that limit during the course of the year, if there are requests for places. Where there are more requests for places than the number of places at that school, we allocate places in order of priority according to the school's admissions criteria.

NOR 2011	Number on Roll. We have included the roll for January 2011 to show you the likely size of the school.
Designated measuring point	If applying the admissions criteria results in there being more children with an equal right to admission to the school than the number of available places, the tie break will be the distance the pupil lives from the school, measured in a straight line, using the Local Authority's computerised measuring system, with those living closer to the school receiving the higher priority. The Local Authority will measure the distance from the address point of the pupil's home to a point on the school site, agreed with the governing body of the school. This point is the designated measuring point.
Admissions in September 2011	We have included this information as you may find it helpful when considering whether or not places are likely to be available at your preferred school. You should be aware, however, that numbers vary from year to year and the availability of places in September 2011 will not mean that places will be available in September 2012. Likewise oversubscription in September 2011 might not mean oversubscription in September 2012.
Admissions criteria definitions	Some schools have definitions as part of their admissions criteria to help you understand if you meet a particular criterion, for example an explanation of what is meant by 'regular attendance' at a church. Therefore, if you want your religious leader to sign your form to confirm your religious affiliation you must take this book for them to check the school's criteria.

## Lower school information sheets

### All Saints Lower School

Head: Mrs D Gower- Acting Headteacher		Address: Church Street, Clifton, Shefford, Bedfordshire, SG17 5ES		Tel: (01462) 628444	
Website: www.allsaints.beds.sch.uk Email: allsaintslower@schools.bedfordshire.gov.uk			Designated measuring point: Main entrance		
Category Age Range	NOR 2011	Admission Number 2012	Admissions in Sept 2011		
VA (C of E) Up to 9 Years			Admission Number: 30	Requests Received: 38	Places Offered: 30
At the time of the initial allocation in April 2011 all applicants were admitted under criteria 1-2 and some were admitted under criterion 3 as described in the 'Starting School' booklet for September 2011.					

### Ardley Hill Lower School

Head: Mr. J Smith- Acting Headteacher		Address: Lowther Road, Dunstable, Bedfordshire, LU6 3NZ		Tel: (01582) 667955	
Website: www.ardleyhill.org.uk Email: ardleyhilllower@schools.bedfordshire.gov.uk			Designated measuring point: Main entrance		
Category Age Range	NOR 2011	Admission Number 2012	Admissions in Sept 2011		
Community Up to 9 years			Admission Number: 60	Requests Received: 28	Places Offered: 28
At the time of the initial allocation in April 2011 all applicants were offered a place.					

### Ashton St. Peter's Lower School

Head: Mrs S McGinty		Address: Leighton Court, Dunstable, LU6 1EW		Tel: (01582) 663400	
Website: www.ashtonstpeters.ik.org Email: ashtonstpt@deal.bedfordshire.gov.uk			Designated measuring point: Front door of school		
Category Age Range	NOR 2011	Admission Number 2012	Admissions in Sept 2011		
VA (C of E) Up to 9 years			Admission Number: 30	Requests Received: 25	Places Offered: 25
At the time of the initial allocation in April 2011 all applicants were offered a place.					

## Central Bedfordshire schools admissions criteria

### Standard Admissions Policy 2012

The Local Authority will apply the following criteria (in the rank order shown below) to decide the order in which places will be allocated when there are more requests from parents/carers than the number of places available.

1. All 'looked after' children
2. Pupils living in the catchment area with siblings at the school
3. Other pupils living in the catchment area
4. 'Very exceptional' medical grounds
5. Other siblings
6. Any other children

The Standard Admissions Policy 2012 applies to the following Lower Schools:

**Ardley Hill Lower School**  
**Beaudesert Lower School**  
**Beecroft Lower School**  
**Caddington Village School**  
**Caldecote Lower School**  
**Campton Lower School**  
**Chalton Lower School**  
**Church End Lower School**  
**Clipstone Brook Lower School**  
**Cranfield Lower School**  
**Derwent Lower School**  
**Doverly Down Lower School**  
**Downside Lower School**  
**Eversholt Lower School**  
**Everton Lower School**  
**Fairfield Park Lower School**  
**Flitwick Lower School**  
**Gothic Mede Lower School**  
**Gravenhurst Lower School**  
**Greenfield Lower School**  
**Hadrian Lower School**  
**Harlington Lower School**  
**Hawthorn Park Lower School**  
**Haynes Lower School**  
**Heathwood Lower School**  
**Houghton Conquest Lower School**  
**Husborne Crawley Lower School**  
**Kensworth Lower School**  
**Kingsmoor Lower School**  
**Langford Lower School**  
**Lawnside Lower School**  
**Leedon Lower School**  
**Mary Bassett Lower School**  
**Maulden Lower School**  
**Moggerhanger Lower School**  
**Potton Lower School**  
**Raynsford Lower School**

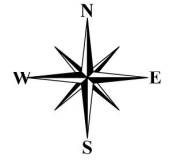
**Ridgmont Lower School**  
**Roecroft Lower School**  
**Russell Lower School**  
**Shefford Lower School**  
**Shelton Lower School**  
**Shillington Lower School**  
**Slip End Lower School**  
**Southill Lower School**  
**Southlands Lower School**  
**St George's Lower School**  
**St Swithun's Lower School**  
**Stanbridge Lower School**  
**Stondon Lower School**  
**Swallowfield Lower School**  
**Templefield Lower School**  
**The Firs Lower School**  
**Tithe Farm Lower School**  
**Toddington St George Lower School**  
**Totternhoe Lower School**  
**Watling Lower School**  
**Westoning Lower School**  
**Woburn Lower School**  
**Wrestlingworth Lower School**

Listed below are the following Lower Schools that do not follow the Standard Admissions Policy 2012 and the criteria that each of these will apply when determining admission:

**All Saints Lower School**

1. All 'looked after' children
2. Pupils living in the Clifton catchment area with siblings at the school
3. Other pupils living in the catchment area
4. 'Very exceptional' medical grounds
5. Other siblings of pupils of All Saints
6. Children of parents who have attended All Saints Church, Clifton once per month for a period of six months prior to application. Parents need the signature of the Rector on the application form
7. Children who are cared for on a daily basis by person/persons living in Clifton
8. Any other children

# Map of Central Bedfordshire with parish boundary



# Contact us

on the telephone...

**01234 718120**

by email...

**admissions@bedford.gov.uk**

on the web...

**www.centralbedfordshire.gov.uk**

Alternatively, you can write to:

**School Admissions Service,**

Borough Hall, Cauldwell Street Bedford, MK42 9AP

## Find out more...

Get in touch if you would like further copies, a large-print edition or more information about this publication

## More information

Për Informacion

المعلومات

माहवारी लष्टी

برای اطلاع

Per Informazione

معلومات کے لئی

Za Informacja

Za Informacije

তথ্যের জন্য

## Please recycle me!

When you have finished, please put me in your recycling bin or bag

**Central  
Bedfordshire**